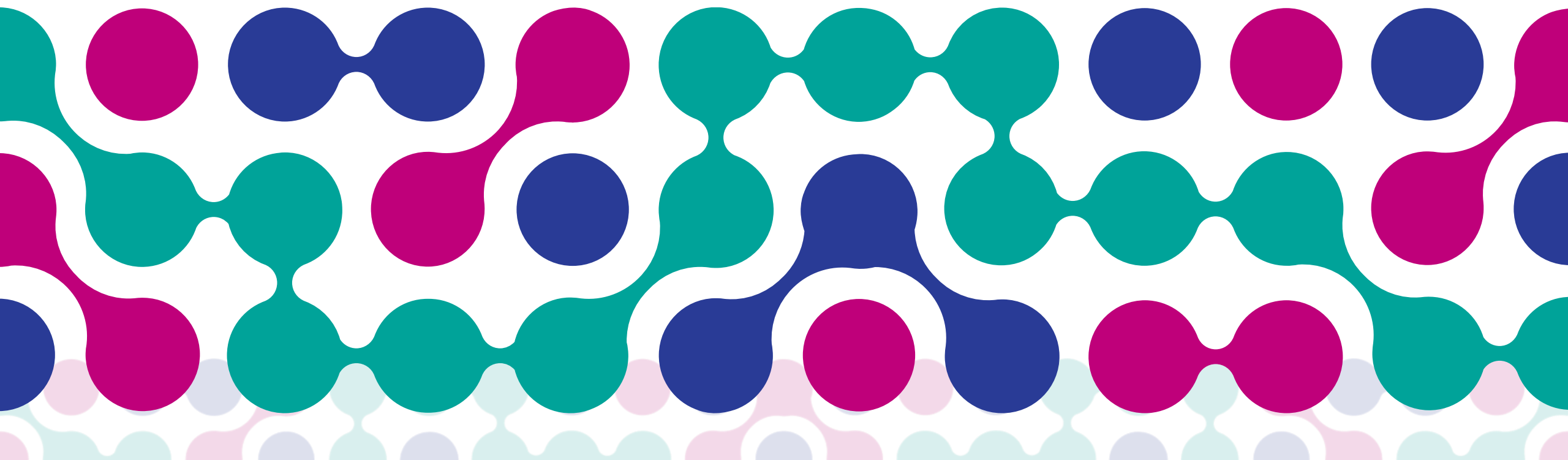


# BSW ICB Approach to Planning for 25/26

October 2024

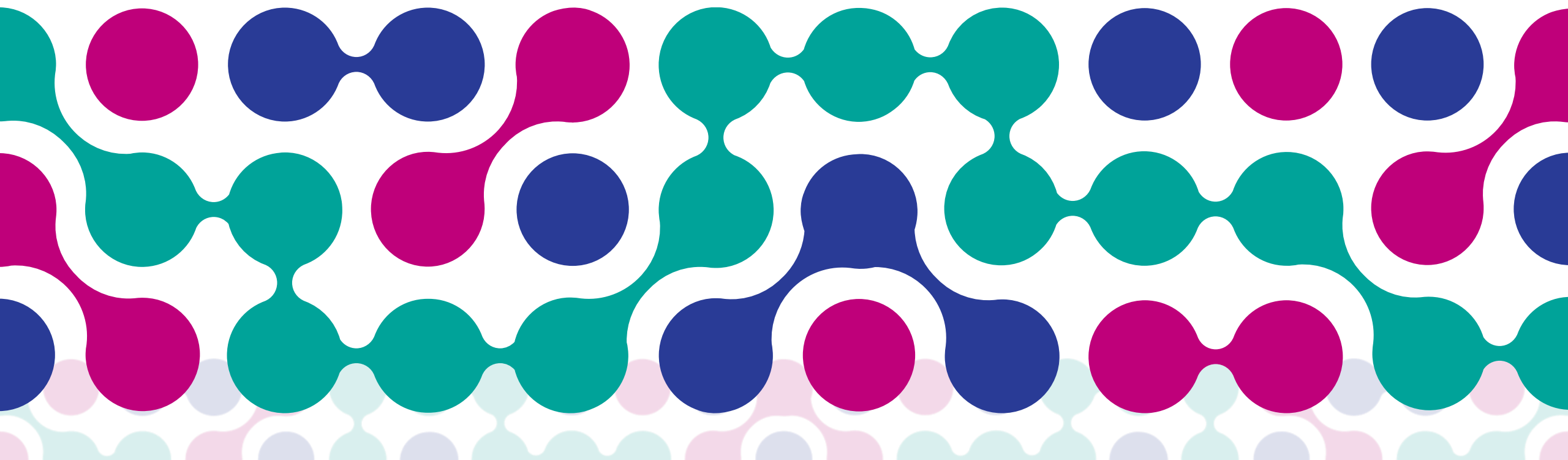


# Planning context for 25/26

- New government reviewing the current NHS strategy and starting a national conversation
- Challenging financial and operational performance context for the NHS nationally and in BSW
- 3 major deliverables for the ICB and NHS organisations re planning:
  - 10-year plan engagement and response (Engagement Nov onwards, plan publication date likely to be May 2025, response TBC post May)
  - Joint Forward Plan / BSW Implementation Plan Update (must publish by 31 March 2025)
  - Operating plan for 25/26 (submission TBC but likely March 2025)
- All deliverables are mandated nationally and have some elements of overlap, we are working through how we approach the three requirements so that the asks can be completed efficiently and allow partners to contribute in a meaningful way



# NHS 10-Year Plan



# Building a health service fit for the future



Bath and North East Somerset,  
Swindon and Wiltshire  
Integrated Care Board

- The government has launched a conversation about the future of the NHS in order to shape a new 10-Year Health Plan for England
- The work is being led by the Department of Health and Social Care, alongside NHS England
- The public, organisations and systems are being asked for their views: [Change NHS](#)
- There will also be a programme on national, regional and local engagement taking place over the next few months

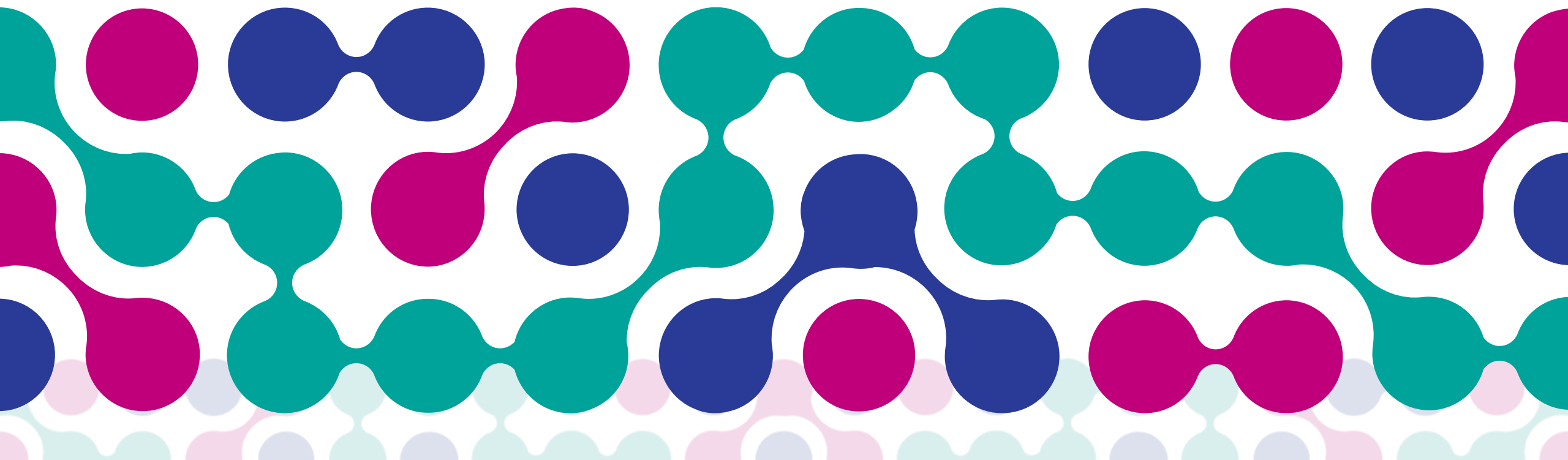


# Approach to engagement

- The first phase of the engagement is asking for:
  - Views on current experience of the NHS
  - Views on the 3 'shifts' - big changes to the way health and care services work – that doctors, nurses, patient charities, academics and politicians from all parties broadly agree are necessary to improve health and care services in England:
    - Shift 1: moving more care from hospitals to communities
    - Shift 2: making better use of technology in health and care
    - Shift 3: focussing on preventing sickness, not just treating it
  - Views on satisfaction with the NHS
- ICBs asked to facilitate local engagement using national materials from November onwards once materials have been shared
- Publication of 10-year plan likely to be around May 2025
- ICBs and NHS organisations will likely then be asked to write their response i.e. how will this be implemented locally



# BSW Implementation Plan (NHS Joint Forward Plan)



# Background and context

## What is the Implementation Plan (Joint Forward Plan)?

- The blueprint as to how we aim to achieve what's set out in the ICP Strategy
- The purpose of the plan is:
  - To set out how the ICB will meet its population's health needs;
  - To describe how the ICB and partners will arrange and provide services to meet physical and mental health needs including the ICS core purposes and ICB legal requirement

## Why do we have one?

- It is a statutory requirement under the Health and Care Act 2022
- The plan is also used to support meeting the requirements of the ICB Annual Assessment
- It must be published each year by 31<sup>st</sup> March

# Our approach for 2025/26

- Implement learning and feedback from our previous versions about what has worked well and what hasn't including:
  - Strengthen evidence on our NHS statutory duties
  - Clearer golden thread between our ICP strategy, implementation plan and our operating plan
  - Review of approach to the Place section of the Plan taking on board feedback from locality partners – would welcome further feedback on this
  - Be clearer on NHS contribution to prevention and outcomes sections
  - Review of outcomes framework to make fit for purpose
  - Continue to work in partnership ensuring that health actions are aligned to the requirements of social care and other key partners, so plans can be collaboratively developed and used for multiple asks
- Aiming to have first draft ready before Christmas and be relatively light touch given national conversation ongoing re 10-year plan



# NHS Operating Plan 25/26



# Operating plan 25/26

- ICB and NHS organisations required to produce a one-year operating plan for the next financial covering finance, operational performance/activity and workforce
- Critical delivery year for BSW given our medium-term financial plan requires us to make significant savings, as well as the need to continue recovering operational performance
- Timeline not yet published (planning guidance expected in December 2024) but we have started local planning as we are aiming to deliver a more joined up approach to planning this year
- Majority of work will take place between November and March, with first submission likely due in March 2025

